

Protein A PhyTip® Columns



PhyTip® Columns

This specification sheet provides details on PhyTip® columns containing Protein A affinity resin.

PhyTip® columns are unique capture, purification and enrichment tools from Biotage designed for micro volume protein sample preparation. PhyTip® columns are available for a variety of liquid handling platforms and contain specific affinity resins for application specific requirements.

Biotage recommends the use of human IgG from serum (Sigma, I4506) as a standard to verify the use of PhyTip® columns with all applications.

Samples for purification and enrichment must be clear and free from particulate matter. It is highly recommended to centrifuge samples and use the clear supernatant only, prior to use with PhyTip® columns.

PhyTip® columns are available in two formats, 200+ with a recommended maximum sample volume of 200 µL and 1000+ with a recommended maximum volume of 1000 µL. For each of the PhyTip® column formats there are several different resin volumes available. Each PhyTip® column has been designed for maximum efficiency of capture and elution of the specific protein(s) of interest when using the specified protocol. See below.

Shipping and Storage

Each pack of PhyTip® columns has been manufactured and qualified to the highest standards and shipped in retainer boxes that maintain the integrity of the specific affinity resin within each PhyTip® column. This product is shipped at ambient temperatures, but on receipt should be stored in a standard laboratory refrigerator between 4 and 8 °C.

- » Do NOT freeze or store frozen.
- » When not in use, keep the lid of the box closed and sealed, store in the refrigerator.
- » Do not allow affinity resin to dry out by extended storage in a dry environment.

Protein A PhyTip® columns are shipped in a storage buffer containing glycerol. Interstitial storage buffer in the column may drip out during shipment or storage to form an opaque resin bed. The resin will still be hydrated in this state unless the bed has visibly shrunk. The resin has dried when the bed has visibly shrunk and only then is it recommended not to use the PhyTip® columns. If this occurs, please contact your regional sales representative.

Important Product Information

The packed column of the PhyTip® can cause pressure to build up within the tip. This internal pressure must be compensated for at each aspirate and dispense step. This is especially important when working with small volumes.

- » 1000+ format
 - » If you need to process a volume < 250 µL, add 230 µL to that volume.
 - » Example: A 200 µL volume should be programmed as 430 µL (200 + 230).
- » 200+ format
 - » If you need to process a volume < 75 µL, add 40 µL.
 - » Example: A 10 µL volume should be programmed as 50 µL (10 + 40).

Prevent aspirating or dispensing air in the PhyTip® column by only mixing 95% of the volume within the well.

» Example: Aspirate and dispense 950 µL of a 1000 µL sample
Calibration tips can be requested free of charge from Biotage.

Protein A PhyTip® Columns

Table 1. PhyTip® Column Binding Capacity

Resin bed volume	Recommended protein binding capacity for highest recovery by dual flow chromatography
5 µL	50 µg
10 µL	100 µg
20 µL	190 µg
40 µL	390 µg
80 µL	770 µg
160 µL	1550 µg
320 µL	3090 µg

PhyTip® columns with Protein A have been optimized for use with specific Biotage reagents and instrument flow rates/volumes as shown below. This information was collected using the MEA 2 Personal Purification System.

All PhyTip® columns with Protein A are supplied with recommended PhyTip® buffers including:

Equilibration Buffer:

Phosphate Buffer solution pH 7.4.

Capture Buffer:

Provided for those situations where additional buffer needs to be added to supplement the volume of the sample and to ensure correct pH for capture.

Wash Buffer I:

Phosphate Buffer solution pH 7.4.

Wash Buffer II:

Saline solution. **Note:** no buffering capacity to ensure effective elution.

Elution Buffer:

For the final elution step. phosphate buffer solution pH 2.5.

Neutralization Buffer:

Tris Buffer solution pH 9.0.

Note: Elution buffer is supplied as a pH 2.5 phosphate buffer solution, if protein to be purified requires less acidic elution conditions the buffer can be adjusted using the Neutralization buffer.

i.e. For a pH 2.8 elution buffer, take 1 mL of standard elution buffer (pH 2.5) and add 30 µL of 1 M Tris buffer standard neutralization buffer to obtain 1 mL of pH 2.8 elution buffer. **(actual pH may vary depending upon volumetric accuracy)**

For a pH 3.0 elution buffer, take 1 mL of standard elution buffer (pH 2.5) and add 40 µL of 1 M Tris buffer standard neutralization buffer to obtain 1 mL of pH 3.0 elution buffer **(actual pH may vary depending upon volumetric accuracy)**

For the neutralization step add 25% v/v of the elution volume e.g. if the elution volume is 20 µL, add 5 µL of 1 M Tris neutralization buffer.

1000+ Protein A PhyTip® Columns

For a 500 µL sample with 10 µg IgG_{2a} (anti-FITC MAb.) containing 5 mg BSA, processed using the conditions shown below, greater than 60% of the original IgG mass is recovered in the final sample volume. In addition, the recovered IgG is over 95% pure as determined by SDS-PAGE with Coomassie detection.

Equilibration:

1000 µL of Biotage Pro A Capture Buffer, passed over the resin bed for two cycles at a flow rate 500 µL/min.

Capture:

1500 µL sample captured by passing through the resin bed for four cycles at a flow rate of 500 µL/min.

Wash:

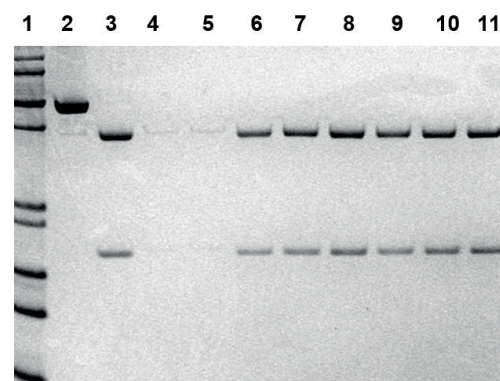
1000 µL of Biotage Protein A wash buffer I, passed over the resin bed for two cycles at a flow rate 500 µL/min followed by a second wash with wash buffer II, passed over the resin bed for two cycles at a flow rate 500 µL/min.

Elute:

Elute the protein into solution with 30 µL of Biotage Protein A elution buffer, passed over the resin bed for four cycles at a flow rate of 500 µL/min. neutralize with 5 µL of Biotage Protein A neutralization buffer.

Example of IgG Purification with Protein A PhyTip® Columns

Nu- PAGE 4–12% Bis-Tris gel with MES running buffer



Lane 1: marker, 2: 2 µg BSA, 3: 2 µg IgG_{2a}, 4: Protein A resin only; 5: Protein A resin only; 6, 7, 8: 2 µL each of Protein A purified IgG_{2a} from PBS, PBS containing 5 mg BSA (2 and 5 cycles loading), respectively; 9, 10, 11: 2 µL each of Protein A purified IgG_{2a} from PBS, PBS containing 5 mg BSA (2 and 5 cycles loading), respectively.

200+ Protein A PhyTip® Columns

For a 200 µL sample with 5 µg IgG2a (anti-FITC MAb.) containing 1 mg BSA, processed using the conditions shown below, greater than 50% of the original IgG mass is recovered in the final sample volume. In addition, the recovered IgG is over 95% pure as determined by SDS-PAGE with Coomassie detection.

Equilibrate:

200 µL of Biotage Pro A Capture buffer, passed over the resin bed for two cycles at a flow rate 250 µL/min.

Capture:

200 µL sample captured by passing through the resin bed for four cycles at a flow rate of 250 µL/min.

Wash:

200 µL of Biotage Protein A wash buffer I, passed over the resin bed for two cycles at a flow rate of 250 µL/min followed by a second wash with wash buffer II, passed over the resin bed for two cycles at a flow rate of 250 µL/min.

Elute:

Elute the protein into solution with 15 µL of Biotage Protein A elution buffer, passed over the resin bed for four cycles at a flow rate of 250 µL/min. Neutralize with 3 µL of Biotage Protein A neutralization buffer.

- » Elution buffer components include: 111mM NaH₂PO₄, 140mM NaCl in 14.8mM H₃PO₄, pH 3.0.

Ordering Information

For Ordering information please visit: www.biotage.com

US Patent Nos: 7,482,169; 7,488,603; 7,722,820; 7,837,871; 7,875,462; 7,943,393; 8,057,668; 8,148,168

Protein A has been demonstrated to have the following binding affinity.

Species	Subclass	Protein A Binding
Human	IgA	variable
	IgD	-
	IgE	-
	IgG1	++++
	IgG2	++++
	IgG3	-
	IgG4	++++
	IgM	variable
	Chicken	IgY
Avian egg yolk	IgY	-
Cow		++
Dog		++
Goat		-
Guinea pig	IgG1	++++
	IgG2	++++
Hamster		+
Horse		++
Monkey		++++
Mouse	IgG1	+
	IgG2a	++++
	IgG2b	+++
	IgG3	++
	IgM1	variable
Pig		+++
Rabbit	no distinction	++++
Rat	IgG1	-
	IgG2a	-
	IgG2b	-
	IgG3	+
Sheep		+/-

EUROPE

Main Office: +46 18 565900
Toll Free: +800 18 565710
Fax: +46 18 591922
Order Tel: +46 18 565710
Order Fax: +46 18 565705
order@biotage.com
Support Tel: +46 18 56 59 11
Support Fax: +46 18 56 57 11
eu-1-pointsupport@biotage.com

NORTH & LATIN AMERICA

Main Office: +1 704 654 4900
Toll Free: +1 800 446 4752
Fax: +1 704 654 4917
Order Tel: +1 704 654 4900
Order Fax: +1 434 296 8217
ordermailbox@biotage.com
Support Tel: +1 800 446 4752
Outside US: +1 704 654 4900
us-1-pointsupport@biotage.com

JAPAN

Tel: +81 3 5627 3123
Fax: +81 3 5627 3121
jp_order@biotage.com
jp-1-pointsupport@biotage.com

CHINA

Tel: +86 21 68162810
Fax: +86 21 68162829
cn_order@biotage.com
cn-1-pointsupport@biotage.com

KOREA

Tel: +82 31 706 8500
Fax: +82 31 706 8510
korea_info@biotage.com
kr-1-pointsupport@biotage.com

INDIA

Tel: +91 22 4005 3712
india@biotage.com

Distributors in other regions are listed on www.biotage.com

Literature Number: PPS607

© 2020 Biotage. All rights reserved. No material may be reproduced or published without the written permission of Biotage. Information in this document is subject to change without notice and does not represent any commitment from Biotage. E&OE. A list of all trademarks owned by Biotage AB is available at www.biotage.com/legal. Other product and company names mentioned herein may be trademarks or registered trademarks and/or service marks of their respective owners, and are used only for explanation and to the owners' benefit, without intent to infringe.